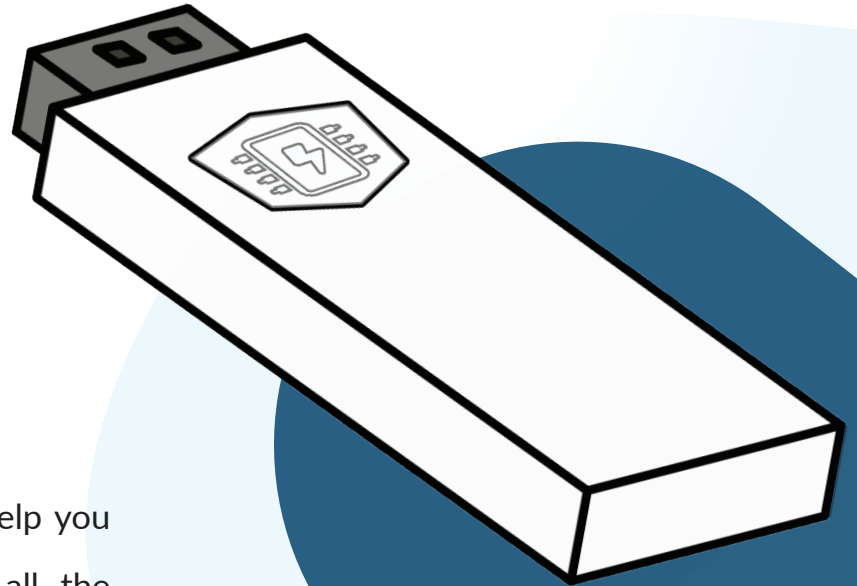


Gateway Datasheet



Our wireless gateway is designed to help you out in managing the locks without all the overhead it is to take care of the network. This means you do not have to concern about encryption, backup, and communication errors. All of this is handled for you, and should the system go off the grid for a while it will automatically detect it and reconnect.



Easy to install



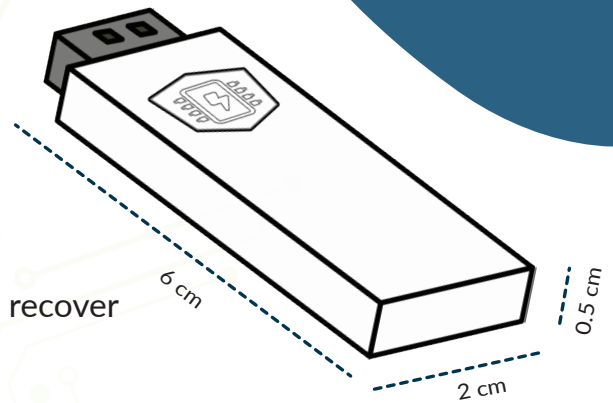
Up to 50 locks



Wifi to Bluetooth

FEATURES

- No expensive on site server setup
- Communication using bluetooth and wifi
- Cloud based backup system
- Hotswap in case of failure (just replace it and it will recover itself automatically)
- Automatically reconnect in case of connection failure
- Installation time: 2 minutes
- Communication with locks using bluetooth
- Designed to extend battery lifetime Supports up to 50 locks
- More gateways gives redundancy
- No administration



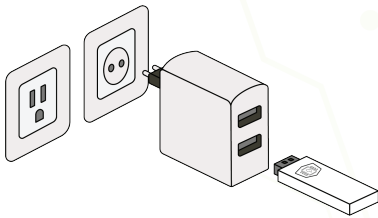
TECHINICAL SPECIFICATIONS

Certificates	CE/ROHS/RED
Volt (V)	5V
Current (A)	1A
Operation temperature	-10~+55°C
Storage temperature	0~+30°C
Warrenty	2 YEAR
Encryptions	AES128
Communication protocols	WIFI / BLE / TCP
Number of openings	10000
Dimension	0.5cm x 2cm x 6cm (height, width, length)

HOW TO INSTALL IT

Step 01

Plug the gateway into a standard power adapter or a usb input slot to power it up



Step 02

The gateway will set up a wifi network called TT, connect to this network using your mobile phone



Step 03

Navigate to the website: <http://192.168.4.1> to connect the gateway to your wifi network



Today's technology have a problem when it comes to power consumption when it comes to wifi. Wifi as of today use a lot of power and makes it not ideal for communicating with battery devices. This is why we have created a gateway converting wifi to bluetooth.

The gateway have a range of up to 100 meter and is because of that ideal for this use case. This means you can connect the gateway to a constant power source, then convert wifi signals to bluetooth signals, which again enables its devices to be online all the time.

What benefits does this give?

- You can administrate the lock from wherever you are in the world.
- You don't have to wait for the to open since it is always online waiting for it to receive an opening signal.
- If you block someone from the lock, it will happen at once.
- Whenever someone is using the lock, the log of the lock will be updated at once in the app.
- You will be informed whenever the lock is offline, thus you know the lock is working as it should.

There are solutions out there which is markeded as a solution where the code is generated offline using a random authenticated method. Those locks does not give the benefits mentioned above.

And best of all, it is cheap and easy to use. All you have to do is to connect it online which is done in 2 minutes. All the complicated stuff like backups and handling connection errors are handled by itself. Backups are put in the cloud and configurations are not stored in the gateway. This again makes it protected against thefts and failure. If the gateway should be stolen or broken you simply replace it with a new one.

THE NETWORK

